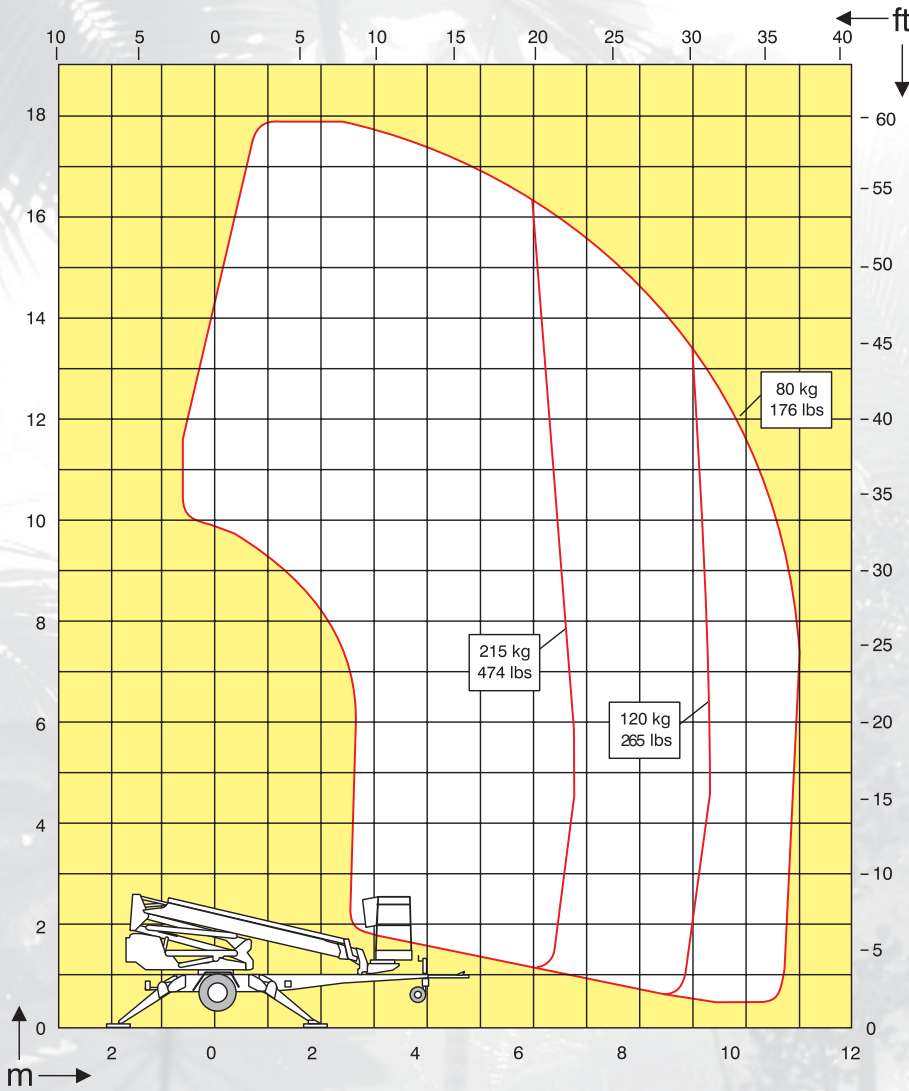


DINO[®] 180XT

Greater versatility



Technical specification on DINO® 180XT



Working height	18.0 m	59'
Platform height	16.0 m	52'5"
Maximum outreach	10.9 m	35'10"
Support width	3.8 m	12'6"
Lifting capacity	215 kg	475 lbs
Basket size	0.7 x 1.3 m	2'4" x 4'3"
Boom rotation	continuous	continuous
Basket rotation	90°	90°
Boom control	proportional	proportional
Transport length	6.55 m	21'6"
Transport width	1.78 m	5'10"
Transport height	2.20 m	7'3"
Weight		
(with power pack)	2100 kg	4630 lbs
Driving system	standard	standard
AC-socket in the basket	standard	standard
Power supply	110/230VAC - 16A/10A	110/230VAC - 16A/10A
Gradeability	25%	25%

The specification is subject to change without notice.

DINO® and Dino Lift® are trademarks registered by the company Dino Lift Oy.



Cage rotation enables easy positioning of the cage.



The articulated riser accounts for the excellent up-and-over capability.



The platform may be fitted with an optional engine (Honda petrol or Hatz diesel).



Manufacturer

DINO Lift®

Dino Lift Oy, Raikkolantie 145, FI-32210 Loimaa, Finland
Tel. +358 2 762 5900, Fax +358 2 762 7160
E-mail: dino@dinolift.com, www.dinolift.com

Dealer