



# LC1385B Crawler Crane

The LC1385 is an innovative powerhouse. It boasts many market leading features including a massive 6 ton lifting capacity, 16.26m boom, optional fly jib with 0-60° offset, rear view camera and front blade as standard.



## Features at a glance...

- 6 Ton Max capacity
- 16.70m Max Working Height (MWH)
- 22.0m (MWH) With Optional Fly Jib
- 2000kg Pick & Carry Duty
- Blade
- Programmable Moment Limiter
- Rear View Camera
- Steel Tracks (optional rubber pads)
- Hydrostatic Transmission
- Fully Enclosed Air Conditioned Cab
- 4 Fall / 2 Fall Hook Block
- Tilt Sensor/Alarm
- Powerful Winch
- Hydraulic Disc Brake
- Two Speed Winch
- Automatic Pentagonal Section Boom
- Minimal Tail Swing
- 2 Year Warranty

## More Images...

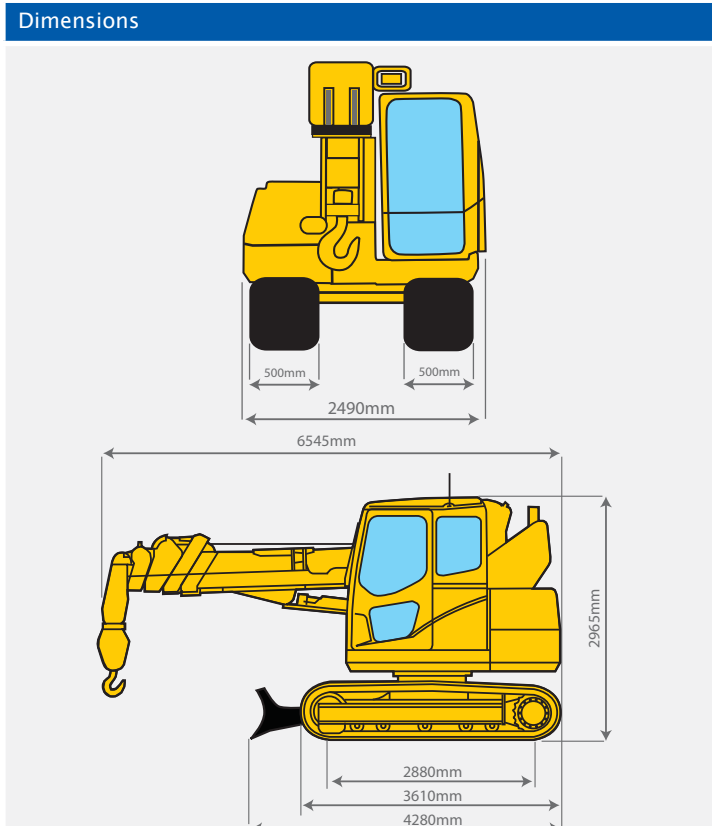


... consider the possibilities



Specifications		
Capacity	Maximum	6.0 t x 2.6m
Working Radius	Maximum	16.10m x 430kg
Lifting Height	Maximum	16.70m x 2600 kg (22m x 820kg with Fly-Jib)
Dimensions	LC1385B	6545mm x 2490mm x 2965mm
Weight	LC1385B	15640kg (15850kg with Fly-Jib)
Hook Speed	Two Speed	28/41m / min. (4 falls, 4th layer)
Single Line Speed	Two Speed	112/164m / min (4 layers)
Hoist Rope	Standard Optional	IWRC 6xFi (29) Ø 10mm x 115m IWRC 6xFi (29) Ø 10mm x 160m
Telescopic System	Boom length Telescoping speed Boom type	4.745 m - 16.265 m 11.52 m / 25 sec Fully automatic 5 section pentagonal telescopic boom
Boom Hoist System	Hoist angle / speed	-5° to 80° / 18 sec
Slew System	Slew angle / speed	360° continuous / 3.4 rpm
Drive	Type	Independent steering controls, hydraulic piston motor with built in automatic brake, planet reduction gears and sprocket crawler.
Traction speed	Low High Gradability Ground length x width Ground pressure	2.9 km/h 5.1 km/h 34° 2880mm x 500mm (Track dimensions) 0.54kgf/cm2 0.55kgf / cm2 (With Fly-Jib )
Engine	Model Type Rated output Starting method Fuel tank capacity	KOMATSU SAA4D95LE-5 4 cylinder diesel, water cooled, direct injection 68.4 Kw / 2,200 rpm Electric Diesel/195L
Standard Equipment	Moment limiter, steel tracks, overwind protection, hydraulic safety valves, level, EMO switch, working status lamp, working light, hour meter, inclination alarm, air conditioning, 4-fall / 2-fall hook block, blade, rear view camera.	
Optional Equipment	Single fall hook, rubber pads, fly-jib.	

Maximum Reach Below Ground Level		
Four Fall	Two Fall	Single Fall
24.50m	50.50m	103.50m



Total rated load									
4.745m boom		7.625m boom		10.505m boom		13.385m boom		16.265m boom	
Working radius (m)	Total rated load (kg)	Working radius (m)	Total rated load (kg)	Working radius (m)	Total rated load (kg)	Working radius (m)	Total rated load (kg)	Working radius (m)	Total rated load (kg)
2	6000	2	6000	2	3000	2	N/A	2	N/A
2.5	6000	2.5	6000	2.5	3000	2.5	3000	2.5	N/A
3	5250	3	5260	3	3000	3	3000	3	2600
3.5	4450	3.5	4460	3.5	3000	3.5	3000	3.5	2600
4	3830	4	3820	4	3000	4	3000	4	2600
4.5	3320	4.5	3310	4.5	3000	4.5	3000	4.5	2600
5		5	2880	5	2710	5	2640	5	2600
6		6	2210	6	2140	6	2100	6	2080
7		7	1720	7	1720	7	1710	7	1710
8		8		8	1400	8	1430	8	1430
9		9		9	1150	9	1200	9	1210
10		10		10	940	10	1020	10	1040
11		11		11		11	880	11	890
12		12		12		12	750	12	770
13		13		13		13	650	13	670
14		14		14		14		14	580
15		15		15		15		15	500
16		16		16		16		16	440
16.1		16.1		16.1		16.1		16.1	430

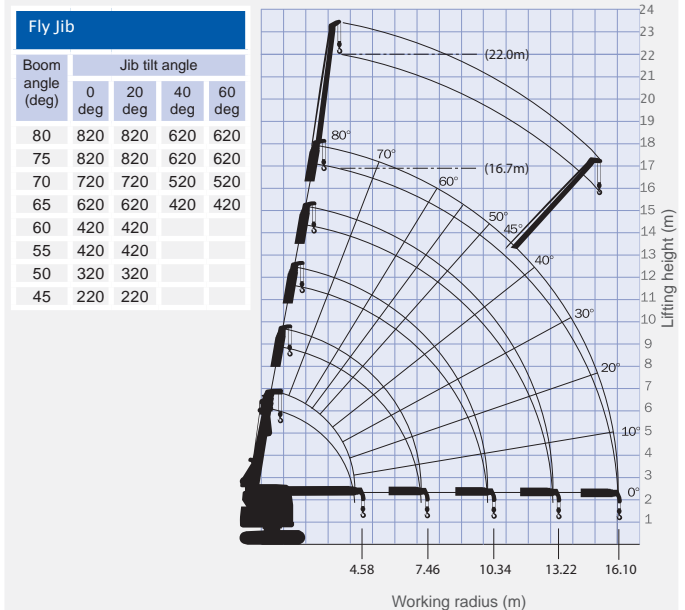
Pick & Carry Duties					
4.745m boom		7.625m boom		10.505m boom	
Working radius (m)	Total rated load (kg)	Working radius (m)	Total rated load (kg)	Working radius (m)	Total rated load (kg)
2	2000	2	2000	2	1500
2.5	2000	2.5	2000	2.5	1500
3	2000	3	2000	3	1500
3.5	2000	3.5	2000	3.5	1500
4	1915	4	1910	4	1500
4.5	1660	4.5	1655	4.5	1500
		5	1440	5	1355
		5.5	1260	5.5	1200
		6	1105	6	1070
		7	860	7	860
				7.5	775
				8	700
				8.5	635
				9	575
				10	470

**Pick & Carry duties are available at boom lengths up to 10.505 metres.**

The Total Rated Load Charts are based on the actual working radius including boom deflection. The weight of the hook (standard 4 fall - 90kg) must be included as part of the load shown in the Total Rated Load Charts.

When using two fall or single fall hooks, use the appropriate four fall Total Rated Load Chart above but with a maximum load of: Two Fall - 3000kg, Single Fall - 1500kg.

**Working Range Diagram & Fly Jib total rated load chart**



The Working Range Chart does not take into account boom deflection under load.