

HA 41 PX



- Max. 62 ft 11 in (19.20 m) horizontal outreach.
- 54 ft 1 in (16.50 m) up and over clearance.
- Standard 4 wheel drive and steer.
- Extending and oscillating axles.



HA 41 PX

Articulated booms

The Haulotte® advantages

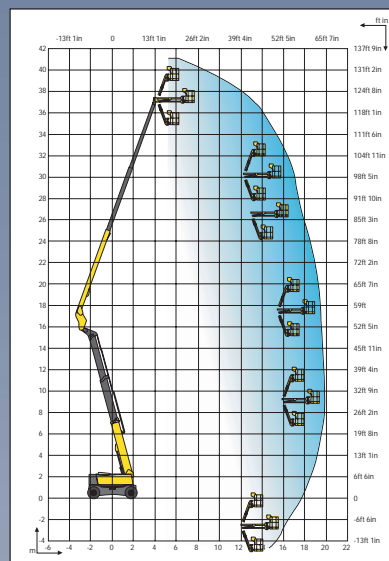
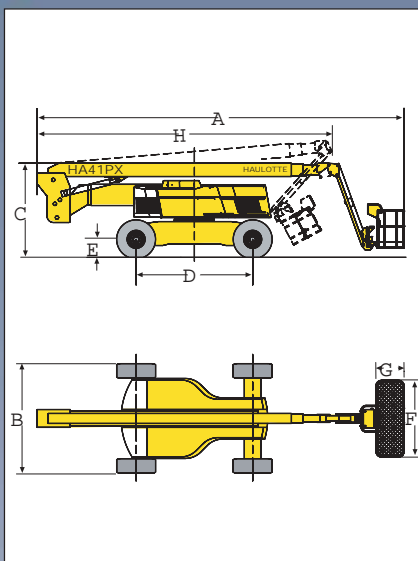
- 19 m displacement with 16 m ball joint.
- Gradeability up to 40%
- Hydraulic differential lock and 15 in (38 cm) ground clearance for improved rough terrain capability
- Continuous 360° turntable rotation
- Full proportional controls and simultaneous boom functions improve functionality
- Load limiter in platform
- Improved working area through a positive/negative articulating fly jib with 140° movement
- 180° hydraulic platform rotation
- Robust, reliable and easy to maintain design

STANDARD FEATURES

- 4 wheel drive and steer
- 2 extending axles
- Oscillating axle
- Rotating engine tray for easier maintenance
- 5° tilt alarm
- 12 V battery / electrical control system
- Electric emergency group in cage
- Free wheeling device
- Hourmeter
- Slewing block pin
- Towing hooks
- Safe use in winds up to 37.2 mph

OPTIONS & ACCESSORIES

- On-board 3.3 kw generator
- 230 V / 115 V - 16 A power line from chassis to platform
- Biodegradable hydraulic oil
- Travel alarm
- Rotating beacon
- Working light
- Catalytic exhaust
- Encoded starting device



SPECIFICATIONS

	HA 41 PX	
Working height	41 m	134 ft 6 in
Platform height	39 m	127 ft 11 in
Maximum outreach	19,20 m	62 ft 11 in
Up and over clearance	16,50 m	54 ft 1 in
Platform capacity	230 kg	507 lb
Fly jib range of motion	140° (+70° / -70°)	
A Length	12,50 m	41 ft
B Width	2,53 m	8 ft 3 in
Width (with extended axles)	3,33 m	10 ft 11 in
C Stowed height	3,05 m	10 ft
D Wheelbase	3,50 m	11 ft 5 in
E Ground clearance	38 cm	15 in
F X G Platform size	2,44 m x 0,8 m	96 in x 32 in
H Travel / transport length	11 m	36 ft 1 in
Tailswing	0,50 m	1 ft 8 in
Drive speed	5 km/h	3 mph
Outside turning radius	5,10 m	16 ft 8 in
Turntable rotation (continuous)	360°	
Hydraulic platform rotation	180°	
Engine	Perkins Diesel - 64 kW - 87 CV	
Gradeability	40%	
Tyres (foam filled)	445 / 65 - 22,5	
Hydraulic tank	240 l /	
Fuel tank	140 l / 36.97 US gal - 30.79 imp gal	
Weight	22 500 kg	49 604 lb

AS1418.10



HAULOTTE UK LTD • Stafford Park 6 - Telford - Shropshire TF3 3AT - UK • Tel : +44 (0)1952 292753 • Fax : +44 (0)1952 292758 • e-mail: haulotte@haulotte.co.uk
 HAULOTTE SCANDINAVIA AB • Aröds Industriväg 66B - 44243 Hisingsbacka - SWEDEN • Tel : +46 (0) 31 744 32 90 • Fax : +46 (0) 31 744 32 99
 e-mail: hwallin@haulotte.se
 HAULOTTE AUSTRALIA PTY LTD • 65 Licola Cres - Dandenong - VIC - 3175 - AUSTRALIA • Tel : +61 (0)3 9706 6787 • Fax : +61 (0)3 9706 6797
 e-mail: sales@haulotte.com.au

Haulotte GROUP

Haulotte Group - La Péronnière - BP 9 - 42152 l'Horme - France • Tél : +33 (0)4 77 29 24 24 - Fax : +33 (0)4 77 29 43 95
 e.mail - haulotte@haulotte.com • web : http://www.haulotte.com